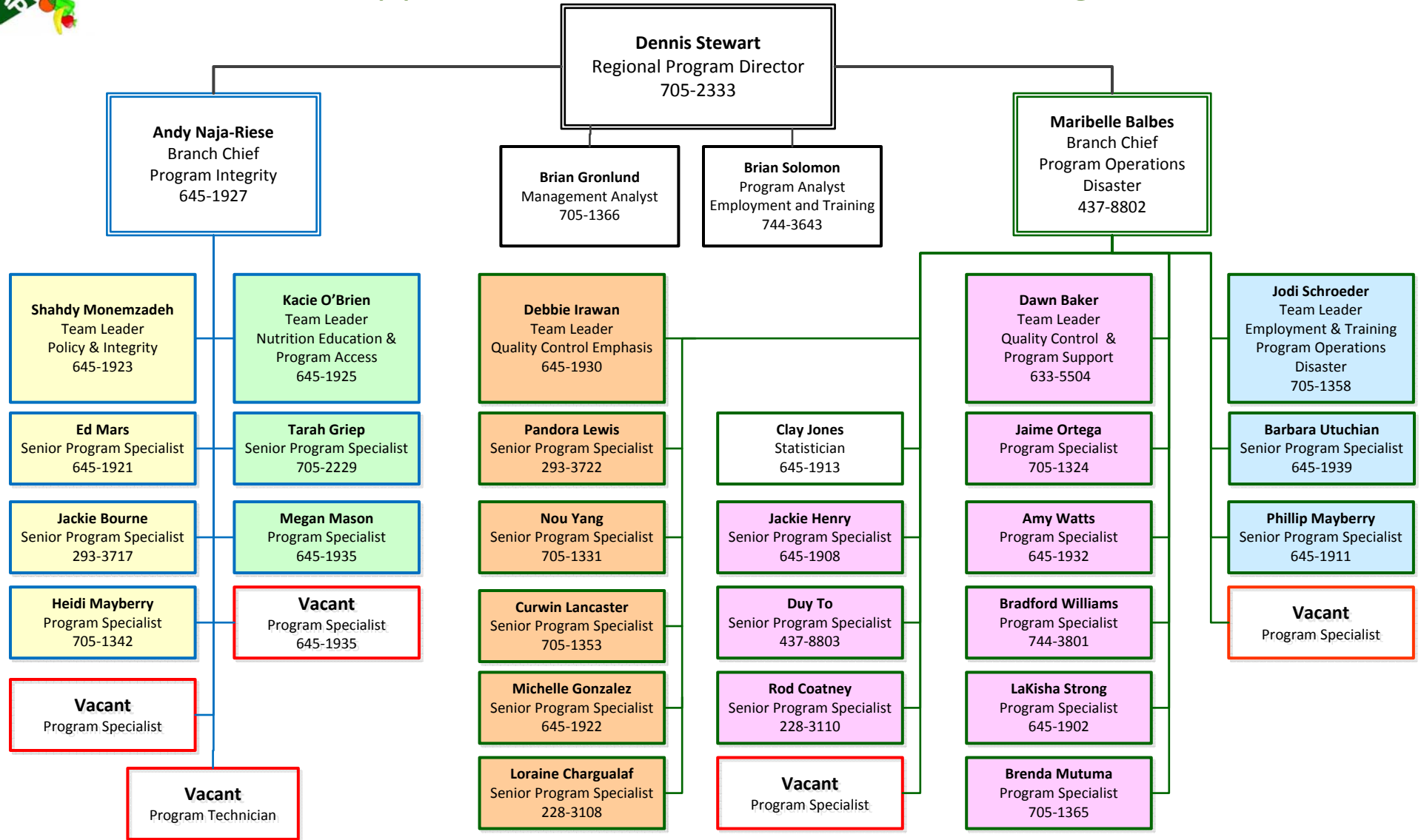




# WRO Supplemental Nutrition Assistance Program





## State Program Officer

State	State Program Officer	Back-up
<b>SNAP</b>		
Alaska	Shahdy Monemzadeh	Megan Mason
Arizona	Barbara Utuchian	Jodi Schroeder
California	Jackie Bourne	Ed Mars
Guam	Jodi Schroeder	Phil Mayberry
Hawaii	Heidi Mayberry	Jackie Bourne
Idaho	Shahdy Monemzadeh	Heidi Mayberry
Nevada	Kacie O'Brien	Megan Mason
Oregon	Phil Mayberry	Jodi Schroeder
Washington	Shahdy Monemzadeh	Ed Mars
<b>Nutritional Assistance Program (NAP)</b>		
American Samoa	Jodi Schroeder	Barbara Utuchian
CNMI	Barbara Utuchian NAP Enhancement Project - Jodi	Jodi Schroeder

### Acronyms:

ABAWD – Able-bodied Adults without Dependents

ALERT - Anti-Fraud Locator using Electronic Benefits Transfer (EBT) Retailer Transactions

CAPER – Case and Procedural Error Rate

D-SNAP – Disaster SNAP

D-NAP – Disaster Nutrition Assistance Program (block grant for territories)

EBT – Electronic Benefit Transfer

eDRS – Electronic Disqualified Recipient System

EPI – Enhanced Program Integrity

ER – Error Reduction

MOU – Memorandum of Understanding

NAP – Nutritional Assistance Program (block grant)

NAPAWG – National Payment Accuracy Work Group

NAPIPM – National Association for Program Information and Performance Measurement

NEERP – National Error Rate Review Project

TOP – Treasury Offset Program

UCOWF - United Council on Welfare Fraud



## Functional Responsibilities by Team

<b>Nutrition Education and Program Access</b>	
SNAP-Ed Training and Technical Assistance	Kacie O'Brien
SNAP-Ed Coordinator	Tarah Griep
SNAP-Ed Physical Activity Program Coordinator	Megan Mason
Outreach/Program Access	Megan Mason
Farmers Markets	Megan Mason
Community Engagement	Andy Naja-Riese & Kacie O'Brien
Food Security	Megan Mason
Healthy Corner Stores	Tarah Griep
Food Insecurity Nutrition Incentives (FINI)	Andy Naja-Riese
Restaurant & Communal Meals	Andy Naja-Riese
Direct Certification – NSLP	Kacie O'Brien
<b>Policy &amp; Integrity Team</b>	
Timeliness & Reporting	Shahdy Monemzadeh
Certification Policy/Waivers	Jackie Bourne
Administrative Notices	Jackie Bourne
ABAWDs	Shahdy Monemzadeh (Jodi Schroeder back-up)
EBT	Heidi Mayberry
ALERT	Heidi Mayberry
Standard Utility Allowances (SUA)	Jackie Bourne
Intentional Program Violations (IPV)	Ed Mars
Claims/TOP	Ed Mars
NAPAWG / CAPER	Jackie Bourne
Data Analytics	Shahdy Monemzadeh
SLEB Agreements	Heidi Mayberry
eDRS	Ed Mars & Heidi Mayberry
OIG Whistleblower Complaints	Heidi Mayberry
<b>Employment &amp; Training, Program Operations and Disaster Team</b>	
Employment & Training (E&T) – operations	Jodi Schroeder & Barbara Utuchian
Employment & Training (E&T) – expansion	Brian Solomon
Nutrition Assistance Program MOUs	Jodi Schroeder
State Exchange Program (SEP)	Phillip Mayberry & Maribelle Balbes
Regional Disaster Coordination (Training & Response)	Maribelle Balbes (Eric Lai – SNP back-up)
D-SNAP & D-NAP (Plans and Plan Activation)	Jodi Schroeder
CNMI NAP Enhancement Project	Jodi Schroeder
Corrective Action Monitoring	Jodi Schroeder
<b>Quality Control &amp; Program Support Team</b>	
Quality Control (QC)	Dawn Baker
Data Analytics for QC	Dawn Baker
Management Evaluation Coordination	Dawn Baker & Brian Gronlund
Statistician	Clay Jones
Performance Reporting	Clay Jones
<b>Quality Control Emphasis Team</b>	
Quality Control (QC)	Debbie Irawan



## WRO SNAP Staff List

<b>Name</b>	<b>Email</b>	<b>Phone</b>
Baker, Dawn	<a href="mailto:Dawn.Baker@fns.usda.gov">Dawn.Baker@fns.usda.gov</a>	(415) 633-5504
Balbes, Maribelle	<a href="mailto:Maribelle.Balbes@fns.usda.gov">Maribelle.Balbes@fns.usda.gov</a>	(415) 437-8802
Bourne, Jacqueline	<a href="mailto:Jacqueline.Bourne@fns.usda.gov">Jacqueline.Bourne@fns.usda.gov</a>	(415) 293-3717
Chargualaf, Loraine	<a href="mailto:Loraine.Chargualaf@fns.usda.gov">Loraine.Chargualaf@fns.usda.gov</a>	(415) 228-3108
Coatney, Rodney (Rod)	<a href="mailto:Rodney.Coatney@fns.usda.gov">Rodney.Coatney@fns.usda.gov</a>	(415) 228-3110
Gonzalez, Michelle	<a href="mailto:Michelle.Gonzalez@fns.usda.gov">Michelle.Gonzalez@fns.usda.gov</a>	(415) 645-1922
Griep, Tarah	<a href="mailto:Tarah.Griep@fns.usda.gov">Tarah.Griep@fns.usda.gov</a>	(415) 705-2229
Gronlund, Brian	<a href="mailto:Brian.Gronlund@fns.usda.gov">Brian.Gronlund@fns.usda.gov</a>	(415) 705-1366
Henry, Jackie	<a href="mailto:Jackie.Henry@fns.usda.gov">Jackie.Henry@fns.usda.gov</a>	(415) 645-1908
Irawan, Deborah	<a href="mailto:Deborah.Irawan@fns.usda.gov">Deborah.Irawan@fns.usda.gov</a>	(415) 645-1930
Jones, Clay	<a href="mailto:Clay.Jones@fns.usda.gov">Clay.Jones@fns.usda.gov</a>	(415) 645-1913
Lancaster, Curwin	<a href="mailto:Curwin.Lancaster@fns.usda.gov">Curwin.Lancaster@fns.usda.gov</a>	(415) 705-1353
Lewis, Pandora	<a href="mailto:Pandora.Lewis@fns.usda.gov">Pandora.Lewis@fns.usda.gov</a>	(415) 293-0339
Mars, Ed	<a href="mailto:Ed.Mars@fns.usda.gov">Ed.Mars@fns.usda.gov</a>	(415) 645-1921
Mason, Megan	<a href="mailto:Megan.Mason@fns.usda.gov">Megan.Mason@fns.usda.gov</a>	(415) 645-1935
Mayberry, Heidi	<a href="mailto:Heidi.Mayberry@fns.usda.gov">Heidi.Mayberry@fns.usda.gov</a>	(415) 705-1342
Mayberry, Phillip	<a href="mailto:Phillip.Mayberry@fns.usda.gov">Phillip.Mayberry@fns.usda.gov</a>	(415) 645-1911
Monemzadeh, Shahdy	<a href="mailto:Shahdy.Monemzadeh@fns.usda.gov">Shahdy.Monemzadeh@fns.usda.gov</a>	(415) 645-1923
Mutuma, Brenda	<a href="mailto:Brenda.Mutuma@fns.usda.gov">Brenda.Mutuma@fns.usda.gov</a>	(415) 705-1365
Naja-Riese, Andrew (Andy)	<a href="mailto:Andrew.Naja-Riese@fns.usda.gov">Andrew.Naja-Riese@fns.usda.gov</a>	(415) 645-1927
OBrien, Kacie	<a href="mailto:Kacie.OBrien@fns.usda.gov">Kacie.OBrien@fns.usda.gov</a>	(415) 645-1925
Ortega, Jaime	<a href="mailto:Jaime.Ortega@fns.usda.gov">Jaime.Ortega@fns.usda.gov</a>	(415) 705-1324
Schroeder, Jodi	<a href="mailto:Jodi.Schroeder@fns.usda.gov">Jodi.Schroeder@fns.usda.gov</a>	(415) 705-1358
Solomon, Brian	<a href="mailto:Brian.Solomon@fns.usda.gov">Brian.Solomon@fns.usda.gov</a>	(415) 744-3643
Stewart, Dennis	<a href="mailto:Dennis.Stewart@fns.usda.gov">Dennis.Stewart@fns.usda.gov</a>	(415) 705-2333
Strong, LaKisha	<a href="mailto:LaKisha.Strong@fns.usda.gov">LaKisha.Strong@fns.usda.gov</a>	(415) 645-1902
To, Duy	<a href="mailto:Duy.To@fns.usda.gov">Duy.To@fns.usda.gov</a>	(415) 437-8803
Utuchian, Barbara	<a href="mailto:Barbara.Utuchian@fns.usda.gov">Barbara.Utuchian@fns.usda.gov</a>	(415) 645-1939
Watts, Amy	<a href="mailto:Amy.Watts@fns.usda.gov">Amy.Watts@fns.usda.gov</a>	(415) 645-1932
Williams, Bradford	<a href="mailto:Bradford.Williams@fns.usda.gov">Bradford.Williams@fns.usda.gov</a>	(415) 744-3801
Yang, Nou	<a href="mailto:Nou.Yang@fns.usda.gov">Nou.Yang@fns.usda.gov</a>	(415) 705-1331